

# PERSONAL NAVIGATOR

WEDNESDAY, MARCH 27, 2013

Sunrise: 5:46 a.m. Sunset: 6:59 p.m.  
 Evening Attire: Cruise Casual  
 All Ashore: 10:00 a.m.  
 All Aboard: 4:30 p.m.  
 Wednesday: Mostly Cloudy High: 75°F/24°C  
 Thursday: Partly Cloudy High: 75°F/24°C  
**COZUMEL, MEXICO**

## SHOWTIME TONIGHT


Featuring the Comedy & Science of

## FREDDY FUSION

WALT DISNEY THEATRE

6:15 p.m. & 8:30 p.m.



 Assistance available at the entrance to the Walt Disney Theatre 30 minutes prior to show time.



### Cozumel Port Information

Cozumel, Mexico is an invigorating port of call on a Caribbean Cruise vacation. An island and a city off the eastern coast of Mexico's Yucatan Peninsula, Cozumel is known for some of the world's healthiest coral reefs and rarest natural recreation. This island in the Caribbean Sea is an extremely popular destination for scuba-diving and snorkeling enthusiasts.

The Mayans considered the site sacred to the Moon Goddess, Ixchel, and women would make regular pilgrimages there to pay tribute and to wish for fertility in return.

A boom in visitors to the island came after 1959, when the famed Jacques Cousteau publicized Cozumel's coral reefs as among the best in the world for scuba diving. Today, Guests can let their imaginations take flight in the island the Mayans named Cozumel—the "Island of the Swallows"—so long ago.

**DOCKING**  
 The ship will dock at the Punta Langosta pier. The pier is located downtown, with walk off access right into the city of San Rafael, Capital of Cozumel.

**CURRENCY TRANSACTIONS IN MEXICO**  
 As of September 2010, the Mexican government enacted a law limiting the amount of U.S. dollars a Mexican business or individual may deposit into their bank account. Because of this limitation, some recommended stores in port may restrict the amount of U.S. dollars they will accept for your purchases. Please remember to take your credit card so that you may be able to make purchases ashore.



### ADULT CABARET

Featuring the Comedy & Ventriloquism of Michael Harrison, as he entertains you in this adult exclusive show.

Rockin' Bar D, (18+)  
 Deck 3, Forward  
 10:15 p.m.

### Don't Miss:

**Disney Channel on Deck**  
*Goofy's Pool, Deck 9, Midship - 3:30 p.m.*  
 Don't change that channel! It's time for a Disney Channel afternoon poolside! Your cruise staff will host an exciting day of games and contests in between your favorite Disney Channel shows! So sit back, relax, and enjoy the sun!

**Goofy's Rock Stars and Guitars**  
*Studio Sea, Deck 4, Midship - 7:30 p.m.*  
 This is your chance to enjoy classic rock music and watch Goofy and friends compete for the Golden Rock Award! This show has something for all ages and is certain to be a blast for the entire family!

**Who Wants to be a Mouseketeer?**  
*Studio Sea, Deck 4, Midship - 9:45 p.m.*  
 Your chance to get in to the "hot seat" and win limited edition prizes. Or, play along as part of our live studio audience.

**Disco Legends**  
*Rockin' Bar D, Deck 3, Forward - 11:00 p.m.*  
 Put on your platform shoes and hit the dance floor as we catch the disco fever. The party kicks off with a groovy dance number from the Studio 54 dancers.



Please check your tour tickets for meeting times and locations. Visit the Port Adventures Desk, Deck 3, Midship for any questions.

### DINNER MENU

Animator's Palate: Captain's Gala  
 Parrot Cay: Captain's Gala  
 Lumiére's: Captain's Gala

### DRINK OF THE DAY

Blue Margarita (Alcoholic)  
 Mango Smoothie (Non Alcoholic)

**IMPORTANT NUMBERS**  
 Fire/Security: 7-3001  
 Medical Emergency: 7-3000  
 Health Center: 7-1923

# FUN FOR ALL AGES HIGHLIGHTS

## FAMILY CRAFTS - TOTE BAGS

*Promenade Lounge, Deck 3, Aft - 1:00 p.m.*  
Create a fun souvenir with your Cruise Staff that is yours to keep.

## CRUISIN' FOR TRIVIA

*Promenade Lounge, Deck 3, Aft - 3:00 p.m.*  
Navigate your way through a round of questions testing your general knowledge.



## DISNEY CHANNEL ON DECK

*Goofy's Pool, Deck 9, Midship - 3:30 p.m.*  
Don't change that channel! It's time for a Disney Channel afternoon poolside! Your cruise staff will host an exciting day of games and contests in between your favorite Disney Channel shows! So sit back, relax, and enjoy the sun!

## FAMILY CRAFTS - 3D CRAFTS

*Promenade Lounge, Deck 3, Aft - 4:30 p.m.*  
Create a fun souvenir with your Cruise Staff that is yours to keep.

## GAME SHOW: THE FEUD

*Promenade Lounge, Deck 3, Aft - 6:15 p.m.*  
"Survey Says" you'll have a fantastic time with our version of a classic game.

## GOOFY'S ROCK STARS AND GUITARS

*Studio Sea, Deck 4, Midship - 7:30 p.m.*  
This is your chance to enjoy classic rock music and watch Goofy and friends compete for the Golden Rock Award! This show has something for all ages and is certain to be a blast for the entire family!

## FAMILY DANCE PARTY WITH CC MAXX

*Promenade Lounge, Deck 3, Aft - 7:30 p.m.*  
Join CC Max, as they play live music at this fun family dance party.

## WHO WANTS TO BE A MOUSEKETEER?

*Studio Sea, Deck 4, Midship - 9:45 p.m.*  
Your chance to get in to the "hot seat" and win limited edition prizes. Or, play along as part of our live studio audience.

# ADULT ACTIVITY HIGHLIGHTS

## VISTA SPA FITNESS CLASSES & SEMINARS

*Stretch & Relax - Vista Spa Fitness Center - 7:00 a.m.*  
*AB Attack - Vista Spa Fitness Center - 8:00 a.m.*  
*Sunglow Makeover - Vista Spa & Salon - 2:30 p.m.*  
*Facial Workshop - Vista Spa & Salon - 3:30 p.m.*  
*Complimentary Footprint Analysis - Vista Spa Fitness Center - 6:00 p.m.*



CLUB  
18\*21

## CLUB 18\*21 - XBOX KINECT

*Diversions, Deck 3, Forward - 5:15 p.m.*

## CLUB 18\*21 - SOCIAL

*Diversions, Deck 3, Forward - 10:00 p.m.*

## SINGLES' MINGLE

*Cove Cafe, Deck 9, Midship - 5:00 p.m.*  
Single, single parent or just traveling alone? Join your Cruise Staff for an informal gathering.

## ADULT CABARET: MICHAEL HARRISON

*Rockin' Bar D, Deck 3, Forward - 10:15 p.m.*  
Featuring the Comedy & Ventriloquism of Michael Harrison at this exclusive Adults only Cabaret Style show.

## DISCO LEGENDS

*Rockin' Bar D, Deck 3, Forward - 11:00 p.m.*  
Put on your platform shoes and hit the dance floor as we catch the disco fever. The party kicks off with a groovy dance number from the Studio 54 dancers.

# DCL GIFT BAG JACKPOT BINGO

**Rockin' Bar D, Deck 3, Forward**  
**Card Sales - 7:15 p.m.**  
**Game Starts - 7:30 p.m.**

Four CASH prizes and ten fantastic Disney Cruise Line gift bag. The Snowball Jackpot continues to grow and could be won anytime.



# YOUTH ACTIVITIES HIGHLIGHTS

## DINE & PLAY

A convenience for families dining at 8:15 p.m., our Youth Activities Counselors will be available at 9:15 p.m. at the entrance of Lumière's, Parrot Cay and Animator's Palate dining rooms to bring registered children to join the fun in the Oceaneer Club and Oceaneer Lab.

**Deck 5, Aft (7-5864) 9:00 a.m. - 12:00 mid**

Infants and Toddlers can enjoy toys and activities at Flounder's Reef Nursery. Reservations are first come, first served so please stop by!

**Deck 5, Midship (7-1440)  
(3-12 years old) 9:00 a.m. - 12:00 mid**



## CHIP AND DALE'S RESCUE RANGERS

**1:45 p.m.**  
Chip and Dale are recruiting new Rescue Rangers and your children will enroll into Ranger School in order to become official Rescue Rangers.

## ALOHA LUAU

**7:45 p.m.**  
It's party time, Hawaiian style! Come join us for a Luau experience and learn how to dance like Lilo & Stitch.



**Deck 5, Midship (7-1445)  
(3-12 years old) 9:00 a.m. - 12:00 mid**

## GASSES IN ACTION

**1:45 p.m.**  
A hands-on experiment filled activity where you will learn about the three states of matter.

## MONSTROPOLIS MOST WANTED

**7:15 p.m.**  
Have fun while you look for clues, play puzzle games, and find out which monster stole the children's door.



**Deck 2, Midship (7-5816)  
(11-14 years old) 9:00 a.m. - 1:00 a.m.**

## LAVA FLOW

**3:30 p.m.**  
Build your own volcano and watch it erupt as you learn about the physics of volcanos.

## ANIMATION

**5:30 p.m.**  
Disney Animation: The Illusion of Life takes guests behind the scenes of Walt Disney Animation Studios and delivers an entertaining and enlightening overview of animation principles and techniques, along with a strong Disney identity and collateral take-away.



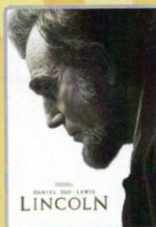
**Deck 11, Midship (7-18517)  
(14-17 years old) 12:00 p.m. - 2:00 a.m.**

## SHIP FACTOR

**12:00 mid**  
Ready for one of the toughest challenge competitions onboard?

# BUENA VISTA THEATRE

## Today's Movies



**11:15 a.m.**  
Duration: 2 hr 30 min  
Rating: PG-13



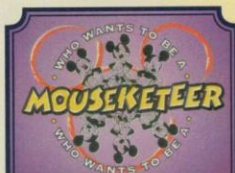
**2:15 p.m.**  
Duration: 1 hr 53 min  
Rating: PG



**5:00 p.m. & 8:00 p.m.**  
Duration: 2 hr 07 min  
Rating: PG



**10:45 p.m.**  
Duration: 1 hr 24 min  
Rating: PG



Your chance to get into the world famous hot seat and win an exclusive prize in our version of the well known television game show.

**Studio Sea,  
Deck 4, Midship,  
9:45 p.m.**



Put on your platform shoes and hit the dance floor as we catch the disco fever. The party kicks off with a groovy dance number from the Studio 54 dancers.

**Rockin' Bar D (18+),  
Deck 3, Forward,  
11:00 p.m.**

## YOUTH ACTIVITIES OPEN HOUSE

Open House is an opportunity for all to come and participate in a variety of exciting activities and free time in the Oceaneer Club, Lab and Edge throughout the cruise. During these times secured programming will still be offered in the other venue for those looking to check their children into care.

Edge: 9:00 a.m. - 10:30 a.m.  
Disney's Oceaneer Lab: 2:30 p.m. - 5:30 p.m.

# MORE TO ENJOY WHILE ONBOARD



## PLAN YOUR NEXT CRUISE

Avoid the last minute rush! Book your next cruise today for the best availability and pricing. You'll save 10%, receive up to a \$200 onboard credit, and pay a reduced deposit! Visit the Future Cruise Sales desk, located Midship on Deck 4 or call 7-2848.

## COZUMEL PORT & SHOPPING INFORMATION

Cozumel is your LAST CHANCE to shop Tax and Duty Free. Join Kristen from 10:30 a.m.-11:30 a.m. in Diamonds International, Store #1A for Easter Specials and the Crown of Light Diamond Trunk Show! Don't forget your shopping maps, coupons, and VIP cards! Happy Shopping!

## DISNEY VACATION CLUB® GROUP PREVIEW

Want to learn more about taking magical vacations year after year? Please see a Disney Vacation Club representative on Deck 4, Midship, or call 7-2805 from your stateroom phone for more information about our interactive group presentation.

## QUARTER MASTER ARCADE

Where can you fly a fighter jet, save a Princess, race NASCAR's greatest and beat bad guys all before dinner? Quarter Master is on Deck 9, Midship, where the champions play.

## SURF @ SEA

\$0.75 per minute or save money by buying blocks of time. \$55 for 100 minutes, \$100 for 250 minutes and \$150 for 500 minutes. Wireless information sheets are available at Guest Services, Deck 3, Midship and Internet Cafe, Deck 3 Aft.

## CARE FREE TRAVEL OPTION

Visit Guest Services on Deck 3, Midship, to book shuttle service from our port back to the Houston vicinity airports. Cost is \$30.00 and may be booked up until 6:00 pm today.



## VISTA SPA

Deck 9, Forward - Phone: 7-1465

## VISTA SPA SPECIAL

Pamper yourself and receive all of the treatments below:  
Back massage, Scalp Massage, Skin Specific  
Mini Facial, Foot and Ankle Massage - For only \$99

## DOONEY & BOURKE

Dooney & Bourke has created Disney Cruise Line® exclusive bags. Each bag has a unique style.

Treasure Ketch,  
Deck 4, Midship.



## SMILE!

Tonight is your last chance to have portraits of family and friends. Portraits will be available in the Lobby Atrium, Deck 3, Midship

5:00 - 6:00 p.m., 7:15 - 8:30 p.m., and 9:30 - 10:30 p.m.

*\*Please note that photos are available for viewing on our interactive photo kiosks approximately five hours after being taken and are only available for purchase during this cruise.*



Hola! We have arrived at the island paradise of Cozumel just off the coast of Mexico. This is the perfect day to enjoy the beach in Cozumel or zip-line, rock climb and snorkel at the Adventure Park. There is a myriad of options, so make sure to book your place at the Port Adventures Desk, Deck 3, Midship.

## SHOPPING

### SOPHIA FIORI DIAMOND TRUNK SHOW

Sophia Fiori is the world's leader in vivid colored diamonds and jeweler to the stars. The Sophia Fiori team has brought with them over \$1 million in diamonds at all price points from \$500 up to extravagant connoisseur pieces. Treasure Ketch, Deck 4, Midship.

### H2O BATH COLLECTION

Treat yourself to the ultimate indulgence with H2O bath products. H2O offers shampoo, conditioner, lip balm, hydrating body lotion and after sun care. Available in Treasure Ketch, Deck 4, Midship.

### ART GALLERY

Toy Story, Monster's Inc., Finding Nemo, Up - what's your favorite Disney-Pixar toy? You have a chance to purchase a piece of Disney-Pixar artwork to take home with you today! Just stop by the Art Gallery to see the Disney-Pixar Collection. Deck 4, Midship.

### UPBEAT DUTY FREE LIQUOR PROMOTION

Receive 10% off of any bottle over \$100! Don't miss out on this great promotion. Upbeat Duty Free, Deck 3, Midship

### HAPPY ANNIVERSARY, DISNEY CRUISE LINE!

Disney Cruise Line is celebrating its 15th year with an assortment of special edition items such as graphic tees, photo albums and more! Available for a limited time only, swing by Mickey's Mates and pick up your own commemorative item! Deck 4, Midship.

### OFFICER PIN TRADING

Come and trade pins with the officers of the Disney Magic at 7:30 p.m. in Preludes, Deck 4, Forward.

Due to port regulations, when the ship is docked, the stores will remain closed.

## IMPORTANT INFORMATION

### Security Notice

All Guests (including Children) who wish to disembark or embark the ship are required to present their Key to the World card at the gangway. A photo ID is also required for those Guests who are 18 years of age or older. Guests under the age of 18 are required to have a Parent, Guardian or other responsible adult sign an authorization form at the time it is given out. If they wish to go ashore unaccompanied, Authorization forms are available at the gangways and Guest Services.

### Cold and Flu Reminder

Please wash hands frequently and thoroughly, particularly before meals. Contact the Health Center by dialing 7-1923, should anyone in your party become ill.

### Inclement Weather

For the safety of all our Guests, outdoor events may be changed due to unforeseen weather conditions.

### Corridor Quiet Hours

As a courtesy to all our Guests, please recognize quiet hallway hours from 10:00 p.m. to 8:00 a.m.

### Environmental Message

With Disney's commitment to the Environment please refrain from throwing anything over the Ship's side. Thank you.

### No Reserved Seats Policy

As a courtesy to all our Guests we kindly advise that the saving of seats is not permitted in the Walt Disney Theatre, and the saving of the sun loungers is not permitted on Deck 9 and 10. Items left unattended will be returned to lost and found at Guest Services, Deck 3, Midship.

### Smoking

For the comfort of our Guests the following open deck areas on the Starboard Side are designated as Smoking areas:  
Deck 4 Starboard side from 6:00pm to 6:00am ONLY, Deck 9 Forward Starboard side at Quiet Cove and Deck 10 Starboard side. Smoking is prohibited in all Guest staterooms. Guests found smoking in their staterooms will be charged a \$250 stateroom recovery fee. Electronic cigarettes may only be used in designated smoking areas.

### Sunscreen Advisory

Don't forget to apply sunscreen and insect repellent when going ashore.

### Walt Disney Theatre

Theatrical performances may use artificial fog, strobe lights, pyrotechnics and other special effects. For the safety of our performers and the comfort of those around you, the use of any photography or video recording device or any electronic equipment is prohibited.

### Verandah Safety

Please do not leave any combustible materials on your balcony when not present in your stateroom for safety reasons.

Morning	8:30	8:45	9:00	9:15	9:30	9:45	10:00	10:15	10:30	10:45	11:00	11:15	11:30	11:45	12:00	12:15	12:30	12:45	1:00	1:15	1:30	
FUNNEL VISION			Beauty & the Beast (G) Funnel Vision								Cinderella (G) Funnel Vision											
BUENA VISTA THEATRE											Lincoln (PG-13) Duration: 2 Hours 30 Minutes											
CHARACTER	Goofy, Max Lobby Atrium		Lilo, Stitch Lobby Atrium																			
FUN FOR ALL AGES																			Family Crafts Promenade Lounge			
ADULTS	Friends of Bill W. Animator's Palate																					
VIBE																	T Shirt Design					
EDGE	Open House																		Go Fetch			
OCEANEER LAB							Craft Corner										Lunch		Float Fun Trivia			
OCEANEER CLUB	Heffalump Hunting												Memory Wall									
OUT AND ABOUT	Open House Edge																					

Afternoon	1:45	2:00	2:15	2:30	2:45	3:00	3:15	3:30	3:45	4:00	4:15	4:30	4:45	5:00	5:15	5:30	5:45	6:00	6:15	6:30	6:45
FUNNEL VISION	Dumbo (PG) Funnel Vision								Pixar Shorts (PG) Funnel Vision				Lilo & Stitch (PG) Funnel Vision								
BUENA VISTA THEATRE	Wreck-It Ralph 3D (PG) Duration: 1 Hours 53 Minutes								Oz The Great and Powerful (PG) Duration: 2 Hours 07 Minutes												
CHARACTER	For detailed character appearances, call 7-PALS or refer to the Character Screen in the Lobby Atrium.										Pluto Lobby Atrium		Donald Lobby Atrium		Mickey Lobby Atrium		Chip & Dale Lobby Atrium		Goofy Lobby Atrium		
FUN FOR ALL AGES	Wii Challenge Promenade Lounge		Cruisin' for Trivia Promenade Lounge				Disney Channel on Deck Goofy's Pool				3D Crafts Promenade Lounge		LIVE Music with CC Maxx Duo Promenade Lounge		The Feud Promenade Lounge		Showtime: Freddy Fusion Walt Disney Theatre				
ADULTS	Sunglow Makeover Vista Spa&Salon				LIVE Music with David Quiet Cove				Facial Workshop Vista Spa&Salon		Club 18*21 - Xbox Kinect Diversions		Singles' Mingle Cove Cafe		LIVE Music with David Sessions						
VIBE	Scavenger Hunt						Gotcha Registration				Gender Wars										
EDGE	Go Fetch		Lava Flow				Animation														
OCEANEER LAB	Gasses in Action		Open House				Flubber														
OCEANEER CLUB	Chip and Dale's Rescue Rangers				GAGA Ball				Story Time w Belle		Dinner										
OUT AND ABOUT	Hoop It Up! Wide World of Sports Deck																				

Evening	7:00	7:15	7:30	7:45	8:00	8:15	8:30	8:45	9:00	9:15	9:30	9:45	10:00	10:15	10:30	10:45	11:00	11:15	11:30	11:45	12:00	
FUNNEL VISION	Lilo & Stitch (PG) Funnel Vision																					
BUENA VISTA THEATRE	Oz The Great and Powerful (PG) Duration: 2 Hours 07 Minutes										Frankenweenie 3D (PG) Duration: 1 Hours 24 Minutes											
CHARACTER	Belle Lobby Atrium	Daisy Lobby Atrium	Cinderella Lobby Atrium	Tiana Lobby Atrium					Snow White Lobby Atrium	Minnie Lobby Atrium	Aurora Lobby Atrium	Mickey Lobby Atrium										
FUN FOR ALL AGES	Bingo Pre Sales		BQ Gift Bag Jackpot Bingo Rockin' Star D		Showtime: Freddy Fusion Walt Disney Theatre				Who Wants to be a Mouseketeer? Studio Sea		Superstar Karaoke Studio Sea											
ADULTS	Family Dance Party Promenade Lounge				Goofy's Rock Stars and Guitars Promenade Lounge				The Feud Promenade Lounge		LIVE Music with CC Maxx Duo Promenade Lounge		Latin Fever with CC Maxx Duo Promenade Lounge		Guest DJ Nature Rockin' Bar D		Disco Legends Rockin' Bar D		Guest DJ Nature Rockin' Bar D		Late Night Piano with David Sessions	
VIBE	Mix and Match																					
EDGE	Zumba						Pool Party															
OCEANEER LAB	Monstropolis Most Wanted				Who Wants to be a Mouseketeer				GAGA Ball													
OCEANEER CLUB	Aloha Luau				Slide Time				Color Yourself Heroic													
OUT AND ABOUT	Pool Party Mickey's Pool																					

Symbol for activities that will be repeated during the cruise

FOLD

Fold along the dotted lines and take me with you so you don't miss any of the fun!

FOLD

IN THE SPOTLIGHT SERIES

CLIMBCLASS SERIES

CLUBCLASS SERIES

POODROCK SERIES

OPEN HOUSE

CREATE & ANSWER SERIES

# BUENA VISTA THEATRE



**LINCOLN**  
11:15 a.m.  
Duration:  
2 hr 30 min  
Rating: PG-13  
#A0000000



**WRECK-IT RALPH**  
2:15 p.m.  
Duration:  
1 hr 53 min  
Rating: PG  
#A0000000



**THE WIZARD OF OZ**  
5:00 p.m. & 8:00 p.m.  
Duration:  
2 hr 07 min  
Rating: PG  
#A0000000



**FRANK & JESSE**  
10:45 p.m.  
Duration:  
1 hr 24 min  
Rating: PG  
#A0000000

IMPORTANT NUMBERS  
Medical EMERGENCY: 7-1023  
Health Center: 7-1023

## YOUTH ACTIVITIES THEMED EXPERIENCES

**CLUBHOUSE SERIES**  
focuses on movement and appeals to younger children.

**STORYBOOK SERIES**  
is designed with a strong connection to the Disney classic sources.

**LUMP LUMP! SERIES**  
includes large ground games & movement-oriented activities, and enthusiasm.

**CREATE A MOVIE SERIES**  
will have a tactile focus allowing children to create and admire their work.

**YOUTH ACTIVITIES OVER HOLIDAYS**  
is based activities.

A non-secured program with activities for families, adults and children of all ages to enjoy together.

## SHIP DIRECTORY

### YOUTH ACTIVITIES

**DISNEY'S OCEANMER CLUB** DECK 5, MID 9:00 AM - 12:00 MID  
**DISNEY'S OCEANMER LAB** DECK 5, MID 9:00 AM - 12:00 MID  
**EDGE** DECK 2, MID 9:00 AM - 1:00 AM  
**LOUNGER'S REEF NURSERY** DECK 5, AFT 9:00 AM - 12:00 MID  
**VIBE** DECK 11, MID 12:00 PM - 2:00 AM

### RECREATION

**GOOBY'S POOL** DECK 9, MID 6:00 AM - 12:00 MID  
**MIKEY'S POOL** DECK 9, AFT 8:00 AM - 10:00 PM  
**MIKEY'S SLIDE** DECK 9, AFT 12:00 PM - 5:30 PM  
**MIKEY'S SPASH ZONE** DECK 9, AFT 12:00 PM - 5:30 PM  
**PORCY ADVENTURES DESK** DECK 3, MID 7:00 PM - 8:30 PM  
**QUIET COVE POOL** DECK 9, FWD 6:00 AM - 12:00 MID  
**YOUTH FITNESS CENTER** DECK 9, FWD 6:30 AM - 10:00 PM  
**WIDE WORLD OF SPORTS** DECK 19, FWD 6:30 AM - 10:00 PM

### GENERAL INFORMATION

**BIENA VISTA THEATRE** DECK 5, AFT SHOWTIMES  
**DISNEY VACATION CLUB DESK** DECK 4, MID 5:00 PM - 10:00 PM  
**FUTURE CRUISE SALES DESK** DECK 4, MID 9:00 AM - 10:00 AM  
7:00 PM - 10:00 PM

**FUNNEL VISION** DECK 9, MID SHOWTIMES  
**GUEST SERVICES** DECK 3, MID 24 HOURS  
**HAIR BRANDING** DECK 9, MID 24 HOURS  
**MEDICAL HEALTH CENTER** DECK 1, FWD 9:30 AM - 11:00 AM  
4:30 PM - 7:00 PM

**PORT & SHOPPING DESK** DECK 3, MID 6:30 PM - 8:30 PM  
**PRELUDES** DECK 4, FWD 5:45 PM - 6:30 PM  
8:00 PM - 8:45 PM

**QUARTER MASTERS (ARCADE)** DECK 9, MID 24 HOURS  
**SHUTTERS PHOTO GALLERY** DECK 4, AFT 6:00 PM - 11:00 PM  
**VISTA SPA AND SALON** DECK 9, FWD 8:00 AM - 10:00 PM  
**WALT DISNEY THEATRE** DECK 4, FWD SHOWTIMES

### SHOPPING

**MIKEY'S MATES** DECK 4, MID 5:00 PM - 11:00 PM  
**TREASURE KITCHEN** DECK 4, MID 5:00 PM - 11:00 PM  
**ART GALLERY** DECK 4, MID 5:00 PM - 11:00 PM  
**UP-BEAT (DUTY FREE)** DECK 3, FWD 5:00 PM - 11:00 PM



PLEASE REMEMBER TO STAY  
ON SHIPS TIME TODAY IN  
COZUMEL

**DINNER**  
Animators' Palace: Captains Gala  
Parrot Cay: Captains Gala  
Lumiere's: Captains Gala  
Dining Times: 5:45pm & 8:15pm

## Evening Attire: Dress Up / Cruise Casual

### DINING & LOUNGES

#### BRUNCH

**GOOBY'S GALEY** DECK 9, AFT 7:00 AM - 9:30 AM  
**LUMIERE'S (A-LA CARTE)** DECK 3, MID 8:00 AM - 10:45 AM  
**PARROT CAY** DECK 3, AFT 8:00 AM - 10:45 AM  
**TOPSIDERS BUFFET** DECK 9, AFT 7:30 AM - 10:30 AM

#### LUNCH

**GOOBY'S GALEY** DECK 9, AFT 12:00 PM - 3:30 PM  
**LUMIERE'S (A-LA CARTE)** DECK 3, MID 12:00 PM - 1:30 PM  
**PINOCHIO'S PIZZERIA** DECK 9, MID 12:00 PM - 3:30 PM  
**PLUTO'S DOG HOUSE** DECK 9, AFT 12:00 PM - 6:00 PM  
**TOPSIDERS BUFFET** DECK 9, AFT 12:00 PM - 2:00 PM

#### DINNER

**ANIMATOR'S PALATE** DECK 4, AFT 5:45 PM & 8:15 PM  
**LUMIERE'S** DECK 3, MID 5:45 PM & 8:15 PM  
**PAJO** DECK 10, AFT 6:00 PM - 8:30 PM  
**PARROT CAY** DECK 3, AFT 5:45 PM & 8:15 PM  
**PLUTO'S DOG HOUSE** DECK 9, AFT 6:00 PM - 10:00 PM  
**TOPSIDERS CASUAL DINING** DECK 9, AFT 6:30 PM - 8:30 PM  
**TOPSIDERS BUFFET** DECK 9, AFT 6:30 PM - 8:30 PM

### LATE NIGHT DRINKS

**DIVERSIONS** DECK 3, FWD 11:00 PM - 12:00 MID  
**ICE CREAM AT GOOBY'S GALEY** DECK 9, AFT 6:00 PM - 11:00 AM  
**PINOCHIO'S PIZZERIA** DECK 9, MID 9:30 PM - 12:00 MID  
**PROMENADE LOUNGE** DECK 3, AFT 11:00 PM - 11:45 PM

### ADDITIONAL FEATURES

**BEVERAGE STATION** DECK 9, AFT 24 HOURS  
**ROOM SERVICE** Deck 7-4330 24 HOURS

### ENTERTAINMENT - LOUNGES - BARS

**BEAT STREET** DECK 3, MID (AFTER 9:00 PM ADULTS ONLY)  
**COVE CAFE (18+)** DECK 9, MID 6:30 AM - 12:00 MID  
**DIVERSIONS** DECK 3, FWD 5:00 PM - 12:00 MID  
**INTERNET CAFE** DECK 3, AFT 24 HOURS  
**PRELUDES** DECK 4, FWD 5:45 PM - 6:30 PM  
8:00 PM - 8:45 PM

**PROMENADE LOUNGE** DECK 3, AFT 8:00 AM - 12:00 MID  
**PINOCHIO'S PIZZERIA** DECK 9, MID 10:00 AM - 12:00 MID  
**PLUTO'S DOG HOUSE** DECK 9, AFT 11:00 AM - 2:00 AM  
**ROCKIN' BAR D** DECK 3, FWD 7:00 PM - 2:00 AM  
**SESSIONS (18+)** DECK 3, FWD 5:30 PM - 12:30 AM  
**SIGNALS (18+)** DECK 9, FWD 11:00 AM - 10:30 PM

**STUDIO SEA** DECK 4, MID SHOWTIMES

Consumers who order raw or partially cooked, ready-to-eat food of animal origin, are hereby informed that the food is not sufficiently cooked to ensure its safety.

All Ashore: Approx. 10:00 a.m.  
All Aboard: 4:30 p.m.

SHIP'S AGENT IN COZUMEL  
ACS (Agencia Consignataria del Sureste), Calle o Norte No. 14X 10 Y  
15 Ave., Cozumel, Q. Roo., Mexico 77660. Tel. 521-987-873-9490

Don't forget your Camera to capture those Magical Moments!

Check here each day for Character appearances.

For detailed Character appearance information, please dial 7-PALS or see the Character Information Board in the Lobby Atrium.

Meet-and-Greets will be advertised for the length of time the line will be open. To avoid disappointment, please meet at start time of appearances.

## Character Appearances

- GOOBY & MAX**  
Lobby Atrium - 8:45 a.m.
- LILU & STITCH**  
Lobby Atrium - 9:15 a.m.
- PLUTO**  
Lobby Atrium - 4:30 p.m.
- DONALD DUCK**  
Lobby Atrium - 5:00 p.m.
- MIKEY MOUSE**  
Lobby Atrium - 5:15 p.m. & 10:00 p.m.
- CHIP & DALE**  
Lobby Atrium - 5:30 p.m.
- GOOBY**  
Lobby Atrium - 5:45 p.m.
- BELLE**  
Lobby Atrium - 7:00 p.m.
- DAISY DUCK**  
Lobby Atrium - 7:15 p.m.

